



VENUE  
ACCOMMODATION  
BAR AND RESTAURANT

Work, Rest, and Play

Where Historic Charm Meets Modern  
Excellence – Host Your Next Event at  
Tatum, Wellington's Premier  
Conference Destination







# *Tatum*

Est. 1912

- Venue descriptions
- Accommodation
- Dining
- Activities
  - Partners
  - In-house
- FAQs



# Pavillion

- Features Capacity: Up to 200 guests
- Venue Highlights: Purpose-built event space with a wraparound veranda, festoon-lit outdoor areas, and seamless indoor-outdoor flow
- Amenities:
  - Full bar and commercial kitchen
  - Flexible furniture and event styling options
  - 95" Smart TV, wireless microphone, and surround AV sound
  - Outdoor heating around the veranda
  - Air conditioning and fresh air system
  - Natural light or blackout event lighting
- Accessibility: Wheelchair accessible, ground level
- AV Support: AV specialist recommended for larger events
- Outdoor Access: Direct access to outdoor spaces







# Cobham

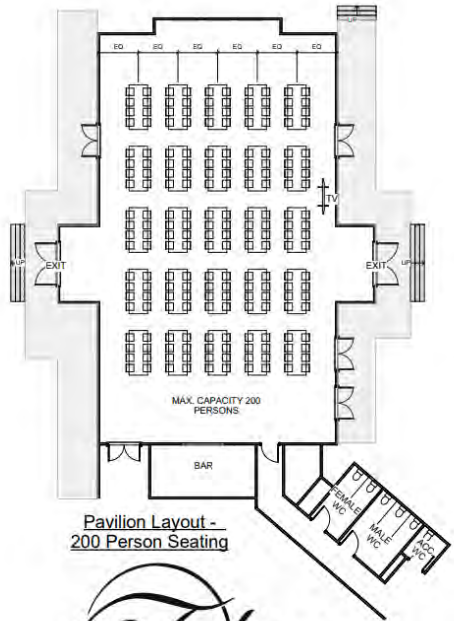
- Capacity: Up to 105 guests
- Warm, professional, and filled with natural light, The Cobham Room offers panoramic views of the Tararua Ranges and opens onto a large private furnished deck for fresh air and breakout sessions.
- Smart TV, integrated AV, microphones, and whiteboard
- High-speed Wi-Fi, air conditioning
- Private deck with mountain views
- Full bar service available
- Access by stairs to second floor

# The Lookout

- Capacity: Up to 20 guests
- A “chapel-like” structure nestle among the tree. The Lookout offers tranquility and inspiration with a cascading deck and botanical mural.
- Full AV, including exterior speakers
- Event lighting with sunset glow
- Air conditioning, disability access
- Indoor/outdoor flow with deck
- Perfect for dining , creative sessions , board meetings or nature-inspired events

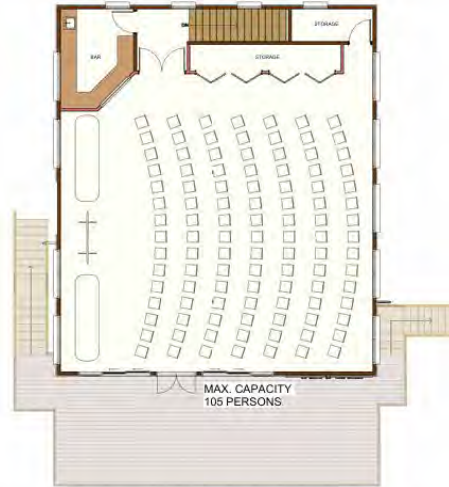






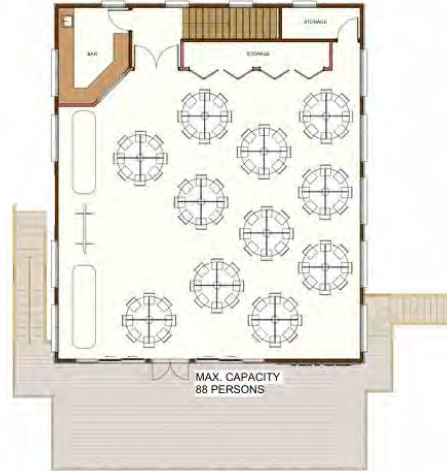
Pavilion Layout -  
200 Person Seating

*Tatum*  
Est. 1912



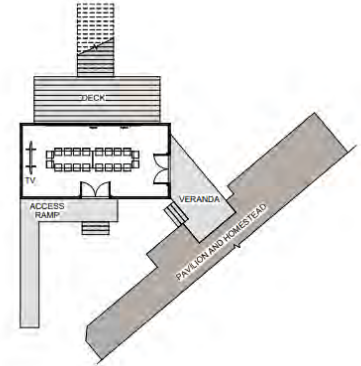
Cobham Conference Room - Theatre/Presentation Layout

*Tatum*  
Est. 1912



Cobham Conference Room - Banquet Layout

*Tatum*  
Est. 1912



Lookout Room Layout - 20 Person Seating

*Tatum*  
Est. 1912

# Conference Venue Floor Plans

# Tatum House

## Upstairs: The Gentleman's Lounge

- Intimate retreat for up to 10 guests
- French doors to a furnished balcony with lawn views
- Lounge seating, minibar, tea/coffee facilities
- Ideal for informal meetings or private discussions

## Downstairs: The Yellow Room

- Up to 16 guests (dining setup)
- Cozy gas fireplace, elegant ambiance
- Perfect for private dining, board meetings, breakout space or leadership sessions

## The Teal Room

- 6–8 guests
- Charming, light-filled space with window seat
- Great for small group discussions, break out space or coaching

## The Forest Room

- 8–10 guests (dining setup)
- Nature-inspired space designed for comfort and creativity
- Featuring lush greenery wallpaper, soft lighting, and earthy accents, it offers a serene, intimate setting







# Outdoor Spaces The Dell

- Flat lawn framed by native trees
- Up to 200 guests
- Ideal for ceremonies, cocktail functions, or outdoor presentations
- Timber benches, access to power and bathrooms.





# Cooksley Corner – The Fire Pit Area

- Rustic, starlit space for 200+ guests
- Central fire pit, festoon lighting, dance area
- Outdoor Full bar and BBQ/pizza trailer available
- Perfect for casual networking, team socials, or star gazing
- Purpose built Bathrooms



# Tatum House Lawn

- Alfresco dining, games, or evening gatherings for 200+
- Large deck, festoon lighting, limestone walkways
- Adjacent to Pavilion and bar
- Outdoor speakers
- Lounge furniture
- Outdoor bar set ups and outdoor keg bar
- Lawn games
- Festoon lighting





# Accommodation at Tatum

Three Distinct Ways to Stay





## Modern Boutique Suites

- 29 designer suites (sleep 2–4 per suite; up to 64 guests)
- Super-king or twin beds, plush linens
- Chic ensuite bathrooms
- Kitchenette
- Smart TV, Wi-Fi, air conditioning
- Outdoor seating
- Family, accessible, and pet-friendly options





# Tatum House Luxury Suite

- 1 exclusive suite (sleeps 2)
- Grand king bed, opulent bathroom (soaking tub, rain shower)
- Elegant lounge, drinks bar, 2x smart TVs
- French doors to dual balconies with garden views
- Complimentary Wi-Fi, bespoke room service





# The Glamping Village

- Seasonal available during Summer season from November to April
- 10 lotus belle style canvas tents (sleeps 20 twin-share)
- Power, fans, bedside lighting, plush bedding
- Shared modern bathrooms (men's/women's)
- Communal kitchenette (toasters, microwave, fridge, hot drinks)
- Covered deck with festoon lighting
- Surrounded by nature, perfect for adventurous groups





# Unique Capacity

In summer, Tatum can sleep up to 84 guests onsite — unmatched for retreats or large events in the region.





# Dining at Tatum

## Jamboree Bar & Restaurant

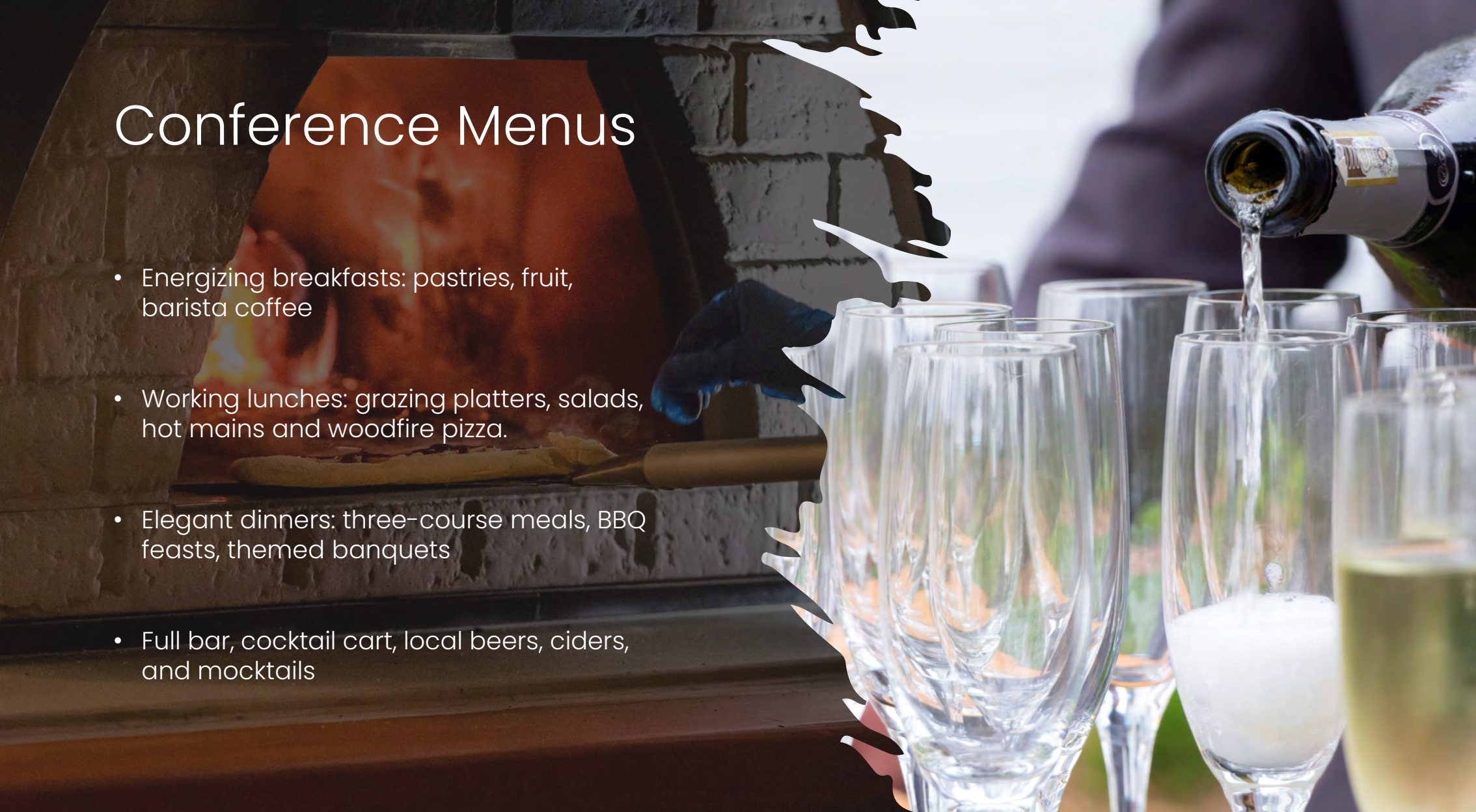
Enjoy gourmet cuisine in a relaxed, stylish setting. Our menus celebrate local, seasonal ingredients and can be tailored for your event. Jamboree Bar & Restaurant





# Conference Menus

- Energizing breakfasts: pastries, fruit, barista coffee
- Working lunches: grazing platters, salads, hot mains and woodfire pizza.
- Elegant dinners: three-course meals, BBQ feasts, themed banquets
- Full bar, cocktail cart, local beers, ciders, and mocktails





# Unique Touch

From elegant alfresco feasts under the stars to chef-tailored menus crafted just for your group, Tatum makes every meal memorable.

And with our mobile pizza trailer, you can enjoy gourmet wood-fired pizzas at any spot — onsite or off. No other venue delivers this level of flavor, flexibility, and fun.







# Activities In-House & Offsite

- Onsite:
- Team-building at Cooksley Corner fire pit
- Pilates for beginners – stretching movement workshop
- Lawn games
- Private Cocktail Making Class
- Sip and Paint interactive art workshop – no experience necessary.
- Quiz and karaoke
- Live Music and Vinyl DJ







# Offsite Partnerships

## Heights Experience

Just 45 minutes away, enjoy clay shooting, archery, axe throwing, golf challenges, and more on a stunning 2,200-acre farm with rustic event spaces—perfect for team-building and fun.





# Lead the Way

Transform your leadership skills through unique horse-assisted workshops led by expert Andrew Froggatt, focusing on trust, communication, and authentic connection – non ridden team building





# FAQs & Booking Information



## How to Book:

- Visit [www.tatum.co.nz](http://www.tatum.co.nz)
- Phone: 02174 973 776  
(Fah – Accommodation Manager)
- Email: [fah.p@tatum.co.nz](mailto:fah.p@tatum.co.nz)

## Can I get a quote or tour?

- Yes! We offer obligation-free quotes and welcome you for a walk-through or familiarization visit.

## What's included in my booking?

- Exclusive or shared use of event spaces
- Onsite accommodation options
- Tailored menus and beverage packages
- Full event planning support
- Tea and coffee self service station
- Event stylist available
- Basic AV with Smart TV monitor and wireless microphone
- Please note for large events we recommend a professional AV partner.

## Is Tatum accessible and pet-friendly?

- Yes! Accessible rooms, family-friendly facilities, and pet-friendly units available.

## Where is Tatum located?

- 850 State Highway 1, Manakau, Levin, Horowhenua





